



STARK COUNTY INFLUENZA SNAPSHOT, WEEK 5

Week ending February 6, 2010. With updates through 02/15/2010.

All data are preliminary and may change as more reports are received.

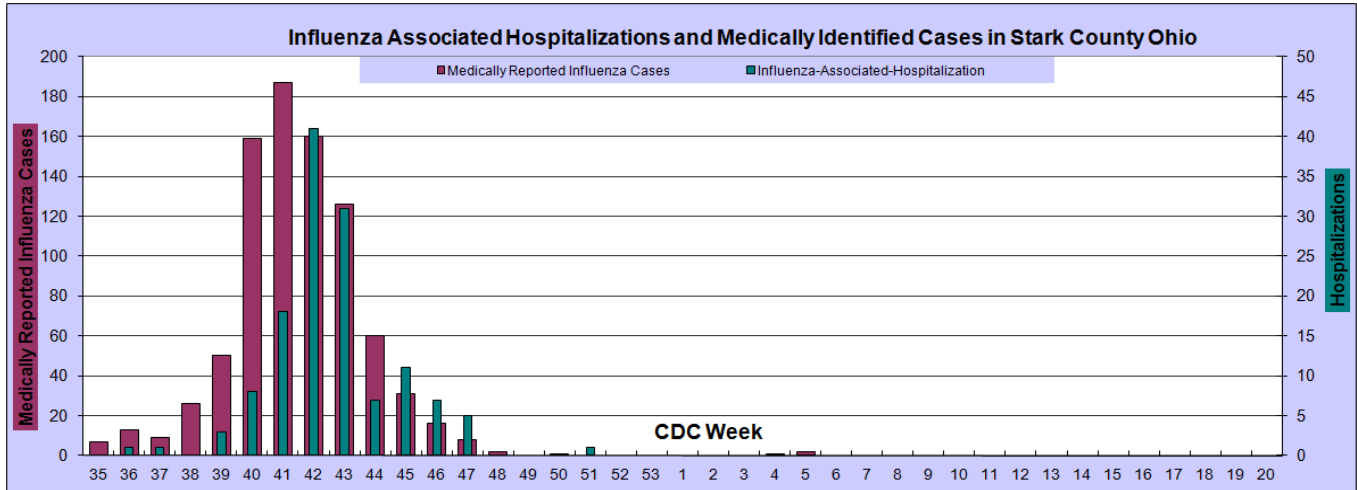
During week 5, (January 31 – February 6, 2010) indicators of influenza like activity revealed very slight increases locally, and remained steady and at very low levels throughout other communities the State and the Nation.

- There were no influenza-associated hospitalizations reported during CDC Week 4. However, as can be seen in Graph 1, there were 2 cases of non-hospitalized influenza patients reported by medical partners. At least one of the patients was culture confirmed type A with no further sub-typing available. (Graph 1)
- Demographics for the medically reported cases not hospitalized: the two cases from CDC Week 5 were aged 1 and 22 years. The average age for this season is 16.7 years with a range of 4 months to 79 years and a median of 11 years. Additionally, **64%** of the reports are in the age group of 5 to 24 years.
- Hospitalized cases ranged in age from ≤ 1 month to 80 years with a median of 37 years. The most affected age group, based on percentage, is 25-50 years at 35%. Young children aged 0-4 years continue to be hospitalized at the highest rate, >7 per 10,000 population.
- Reports from four Sentinel Providers indicated a very slight **increase** to **0.7%** of all patient visits for Influenza-Like-Illness (ILI) in Stark County. The National level of ILI visits continued to **increase slightly** to 2.1%. The National level remains below the baseline level of 2.3%. (See Graph 2)
- Combined Constitutional and Respiratory visits to Emergency Departments in Stark County **increased** to **23.36%** from 21.18 in week 4. This level is slightly below 24.55%, which is expected for CDC Week 5. The overall number of total patient visits by Stark County residents to emergency departments has **decreased** slightly to an average of 451 visits per day. Note: The highest average number of visits for these syndromes usually occurs in CDC week 7 (late February) and is 26.79%. (See Graph 3)
- For week 05, both Cough/Cold (C/C) Products and Thermometer sales **increased** slightly. Both of these influenza surveillance indicators remain well below expected for this time of year. This is the third consecutive week of slight increases in C/C products and the fourth for Thermometer sales. (See Graphs 4 and 5)
- According to 55 area schools reporting absenteeism information, the median percentage of student absenteeism is 4.7%. This represents a **slight increase** from the previous week, but overall remains low for this time of year. (See graph 6)
- Once again, there were no states reporting Widespread geographic activity. The state of Ohio remains at **sporadic** geographic influenza activity. Note: this indicator is reported to the CDC by each state and does not describe severity of disease. Sporadic geographic activity is defined as: Small numbers of laboratory- confirmed influenza cases or a single laboratory-confirmed influenza outbreak has been reported, but there is no increase in cases of ILI. (See National Map)
- Nationally, the CDC identified **99%** of cocirculating strains of influenza (seasonal influenza A (H1), A (H3), and 2009 influenza A (H1N1) and influenza B) as *2009 influenza A (H1N1)*.
- National Pneumonia and Influenza (P & I) Mortality Surveillance **decreased to 7.3%** of all deaths reported through the 122 Cities Mortality Reporting System as due to P & I. This percentage is **below** the epidemic threshold of 7.8% for week 3.

For questions, or to receive this report weekly by email, send requests to either chenning@cantonhealth.org or schanzk@starkhealth.org.

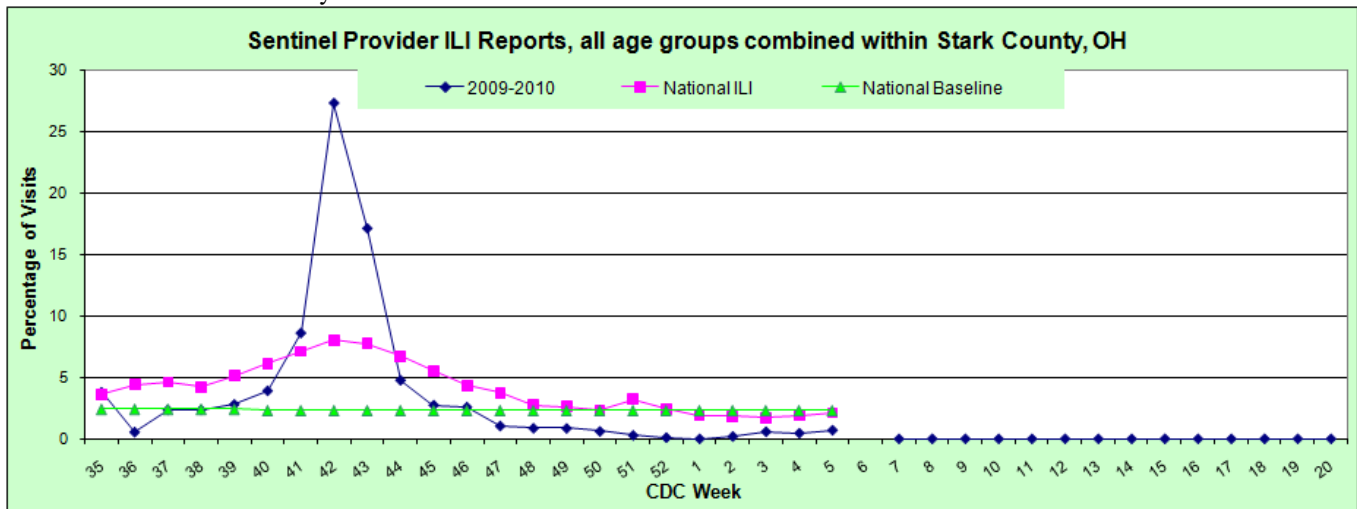
Graph 1: Influenza Cases reported to Local Health Departments

Note: Influenza is only reportable if associated with a hospitalization; therefore, this only represents a small number of actual influenza cases in Stark County.



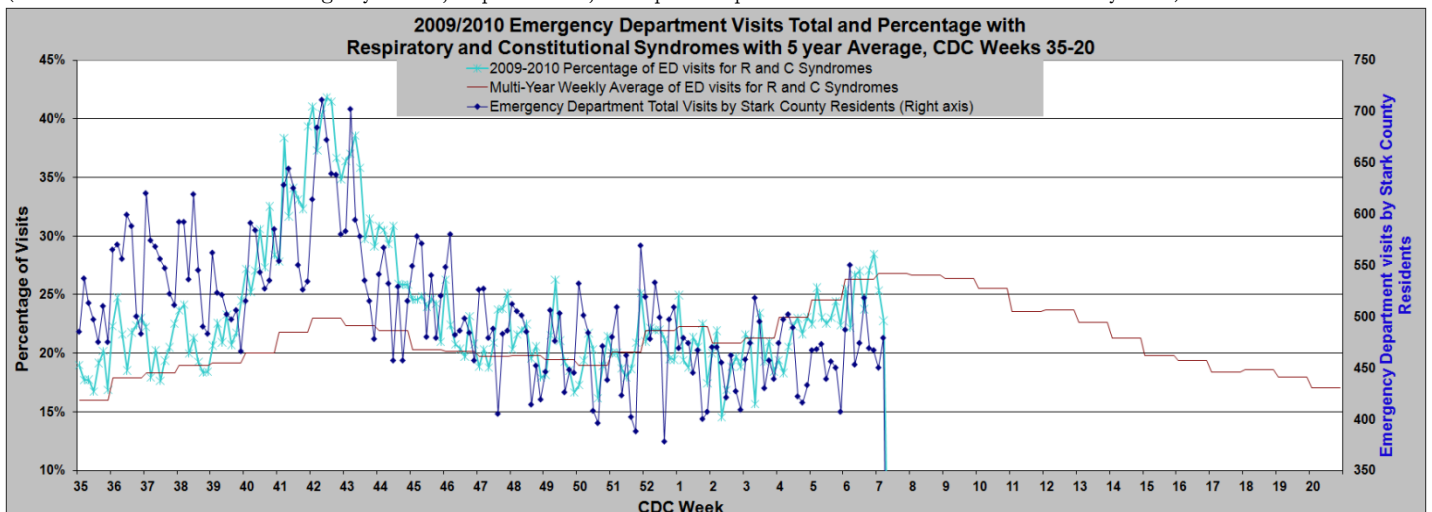
Graph 2: Sentinel Provider Reported Influenza-Like-Illness in Stark County

Sentinel Providers-An influenza sentinel provider conducts surveillance for influenza-like illness (ILI) in collaboration with the state health department and the Centers for Disease Control and Prevention (CDC). Data reported by Stark Counties 4 provider's are combined with other influenza surveillance data to provide a national picture of influenza virus and ILI activity.



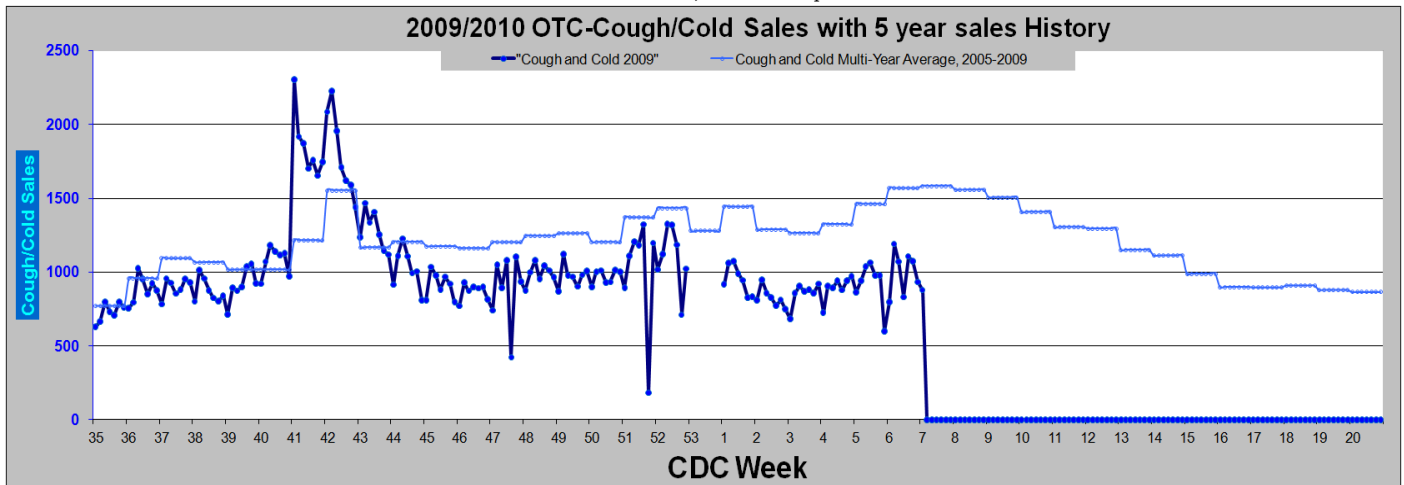
Graph 3: Emergency Department Visits for combined Respiratory and Constitutional Syndromes

(Source Health Monitoring Systems, EpiCenter, hospital patient visit surveillance system)



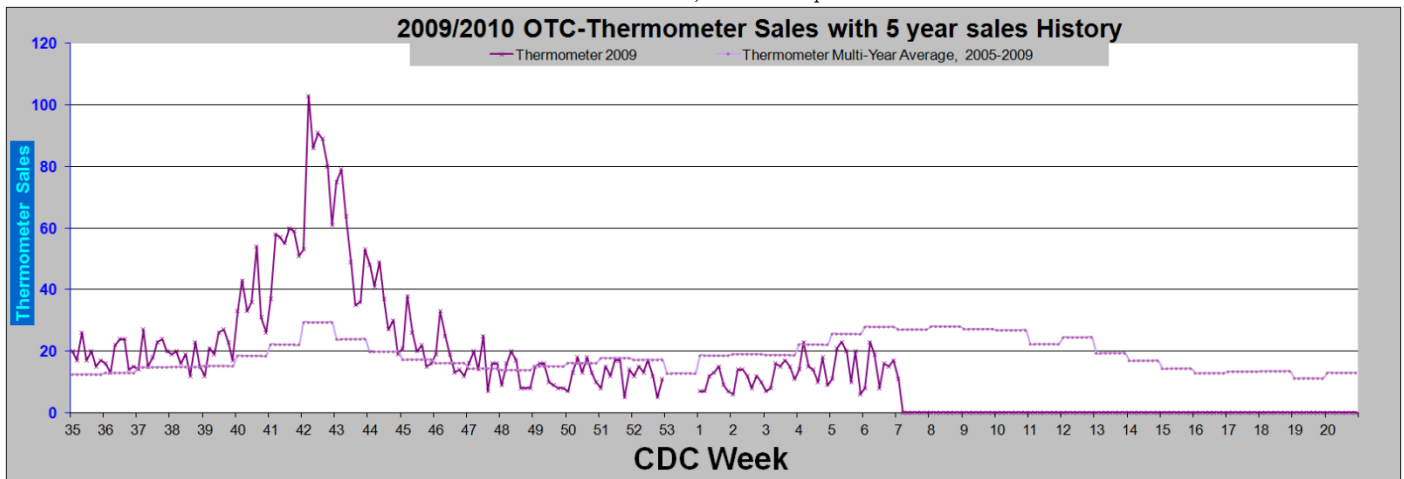
Graph 4: Over-The-Counter Sales of Cough/Cold Product Sales in Stark County

Source: RODS Real time Outbreak Disease Surveillance, Retail pharmaceutical sales.



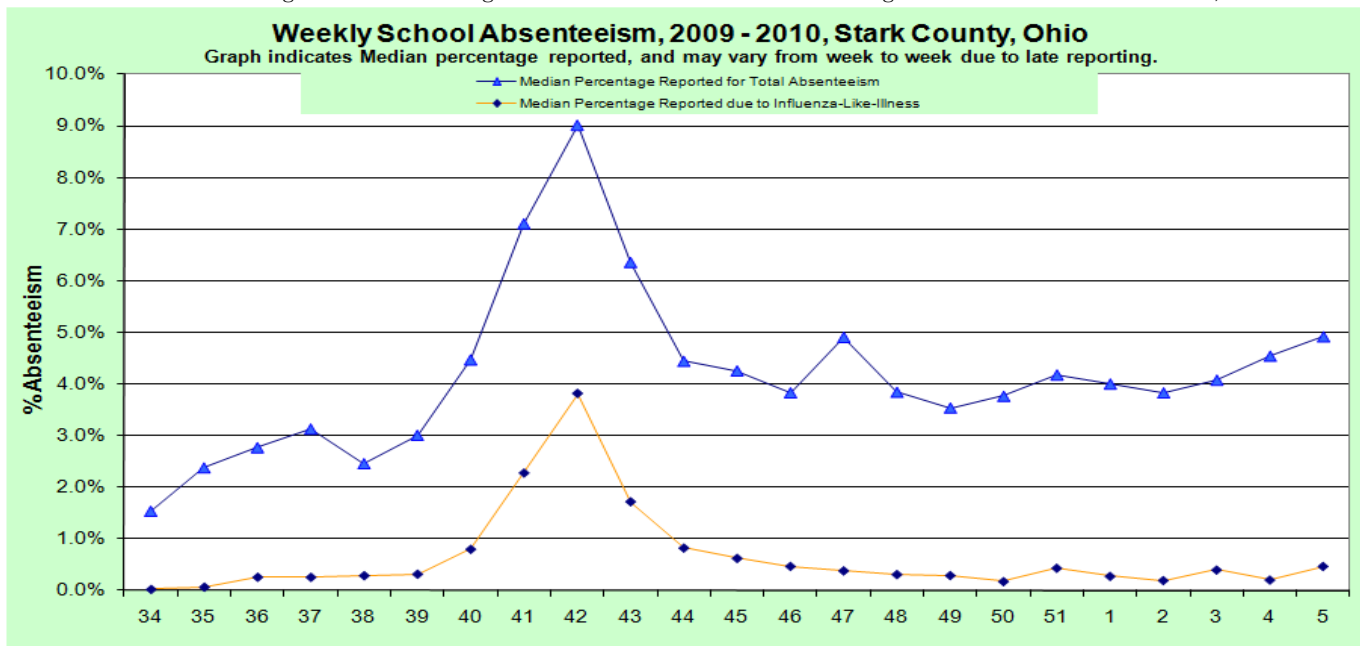
Graph 5: Over-The-Counter Sales of Thermometers in Stark County

Source: RODS Real time Outbreak Disease Surveillance, Retail pharmaceutical sales.



Graph 6: School Absenteeism, 2009-2010, Stark County, Ohio.

(Source: Voluntary reporting by area public and private schools. Schools report overall absenteeism and five illness categories including influenza -like-illness and gastrointestinal illness.)



Map Weekly Influenza Activity Estimates Reported by State and Territorial Epidemiologists

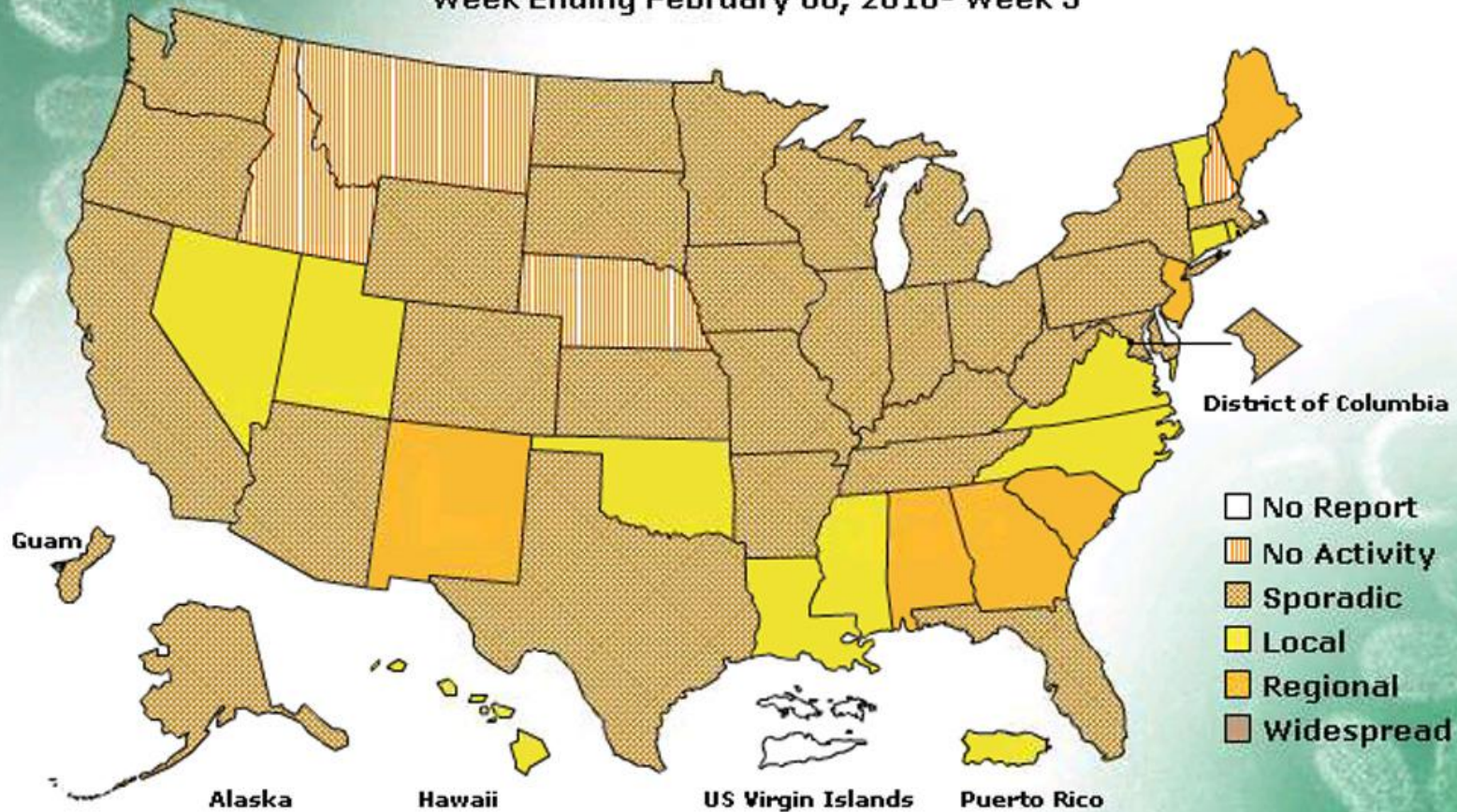
(Source: <http://www.cdc.gov/flu/weekly>)

FLUVIEW



A Weekly Influenza Surveillance Report Prepared by the Influenza Division
Weekly Influenza Activity Estimates Reported by State and Territorial Epidemiologists*

Week Ending February 06, 2010- Week 5



*This map indicates geographic spread and does not measure the severity of influenza activity.